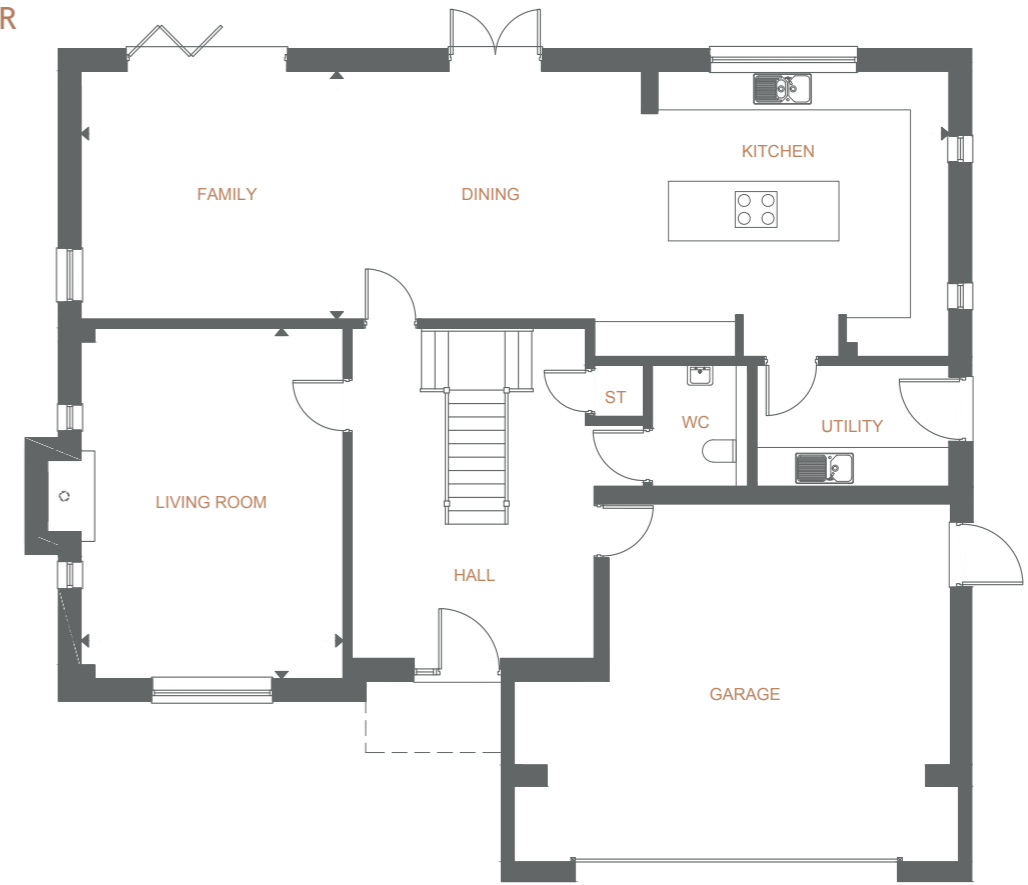




GROUND FLOOR



FIRST FLOOR



M

ALVESTON HOUSE

Situated on a peaceful corner plot, Alveston House has views across the central landscaped open space.

This large five bedroom property showcases a feature galleried staircase with horseshoe landing and spacious first floor accommodation. An integral garage and excellent storage provision make this an impressive yet functional home.

ADRIAN CLIFT, SENIOR DESIGN MANAGER

GROUND FLOOR

Living Room	5.88m x 4.40m	19'-3" x 14'-5"
Kitchen/Family/Dining	4.16m x 14.56m	13'-8" x 47'-8"

FIRST FLOOR

Master Bedroom	6.07m x 3.93m	19'-11" x 12'-10"
Bedroom 2	4.18m x 3.77m	13'-8" x 12'-4"
Bedroom 3	2.85m x 4.40m	9'-4" x 14'-5"
Bedroom 4	3.03m x 3.82m	9'-11" x 12'-6"
Bedroom 5	2.44m x 4.40m	8'-0" x 14'-5"